

HME Compact Interface Relay



Technical Datasheet

Key Features

- Compact Design, Easy Installation
- Related Load: 1C 12A / 2C 8A
- High Sensitivity
- Manual Button & Latch
- Mechanical Indicator Window & LED Indicator
- Industrial Flat Pin Connections
- AC (Red Latch) & DC (Blue Latch) Versions



Options & Ordering Codes

HME - 2 1 - PN G 24DC

Contact Arrangement

1 Pole Changeover (CO)	1
2 Pole Changeover (CO)	2

Connection Type

Plug-In	1
---------	---

Standard Function

Mechanical Indicator / Test Latch LED	PN
LED	PX

Coil Voltage

12DC	12V DC	24AC	24V AC
24DC	24V DC	110AC	110V AC
48DC	48V DC	230AC	230V AC

G	Gold Flash
D	Diode

Contact Data

Contact Arrangement	1P Changeover	2P Changeover
Contact Material	Ag Alloy	
Contact Rating	12A	8A
Rated Voltage	250VAC / 30VDC	
Max. Switching Voltage	275VAC / 33VDC	
Max. Switching Power	2500VA / 300W	1250VA / 150W
Coil Resistance	≥ 50mΩ	
Mechanical Life	≥ 1x10 ⁷ OPS	
Electrical Life	≥ 1x10 ⁵ OPS	

Coil Data

at 23°C

Nominal Voltage VDC	Coil Resistance Ω	Nominal Voltage VAC	Coil Resistance Ω
12	270 (1±10%)	24	240 (1±10%)
24	1100 (1±10%)	110	6300 (1±10%)
48	4300 (1±10%)	230/240	23000 (1±10%)

PLEASE NOTE: Above voltage versions available from stock. Other voltages available to order.

Characteristics

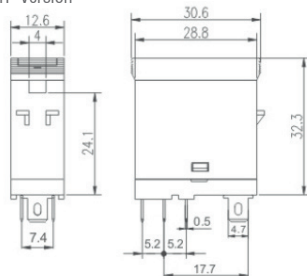
Insulation Resistance	1000mΩ (at 500VDC)	
Dielectric Strength	Between Coil & Contacts	5000VAC 1min
	Between Open Contacts	1000VAC 1min
	Between Contact Sets	3000VAC 1min
Operate Time (at nominal voltage)	≤ 20ms	
Release Time (at nominal voltage)	≤ 10ms	
Ambient Temperature	-40°C to 55°C	
Humidity	5% to 85% RH	
Atmospheric Pressure	86 to 106KPa	
Vibration Resistance	10Hz to 55Hz 1.0mm DA	
Shock Resistance	1000m/s ² (10G)	
Unit Weight	Approx. 20g	

Coil

Coil Power	DC Type	0.53W
	AC Type	1.0VA

Dimensions (mm)

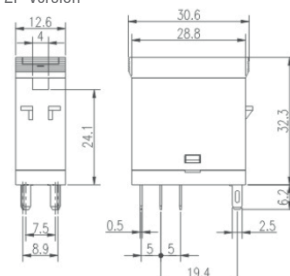
1P Version



Bottom View

Top View

2P Version

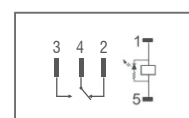


Bottom View

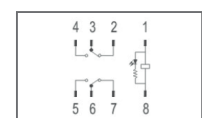
Top View

Wiring Diagram

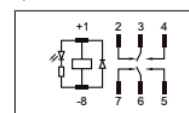
1P Version



2P Version



1/2P Version



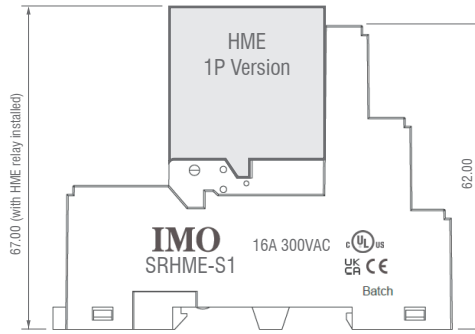
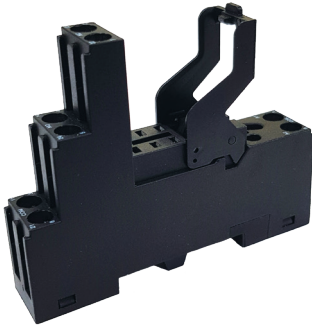
HME Compact Interface Relay



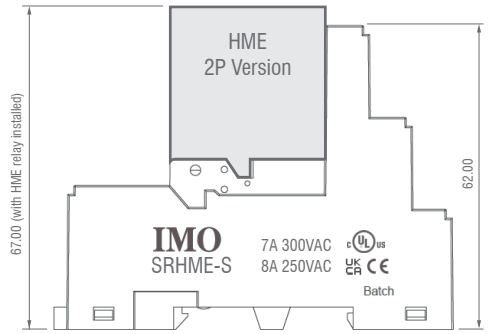
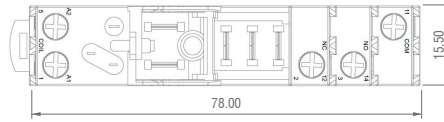
Technical Datasheet

Relay Base - SRHME-S / SRHME-S1

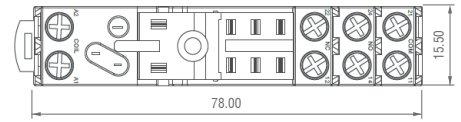
For Single-Sided Wiring of the Contacts (coil on the bottom, com and contact on the top). Comes with marking label as standard



1P Version

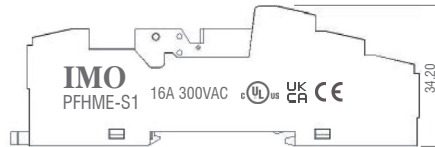
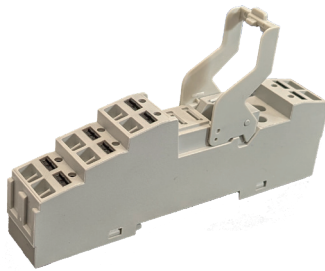


2P Version

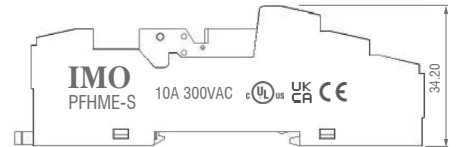
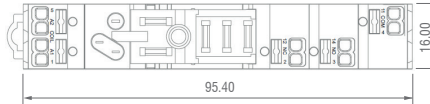


Relay Base - PFHME-S / PFHME-S1

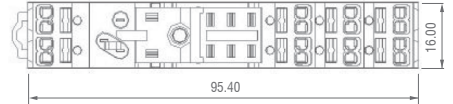
Push Fit terminals permit quick connection of solid or ferruled wires.



1P Version



2P Version



Various Plug-In Modules available upon request

